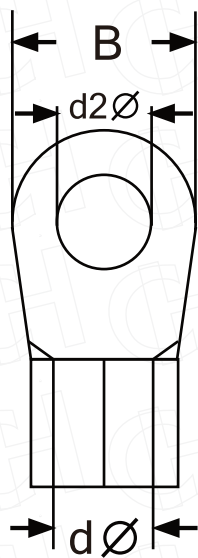




正規格

圓形裸端子

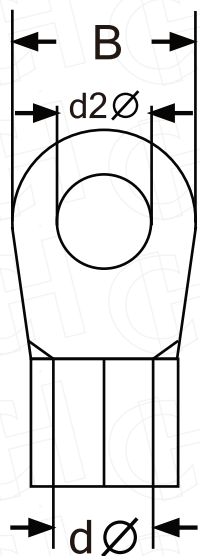
NON-INSULATED RING TERMINALS



ITEM NO.	d2Ø	±0.30mm		牌價 TWD	每盒數量	每件數量	ITEM NO.	d2Ø	±0.30mm		牌價 TWD	每盒數量	每件數量		
		B	dØ						B	dØ					
1.25	CH1.25-3RS	3.2	5.5	1.7	0.44	4000	40000	8	5.3	12.0	4.5	2.2	800	8000	
	CH1.25-3R	3.7			0.44	4000	40000			9.0		2.2	1000	10000	
	CH1.25-3RM	4.3	6.6	0.47	4000	40000	6.4		12.0	2.2	800	8000			
	CH1.25-4RM			0.47	4000	40000	8.4		15.0	2.76	600	6000			
	CH1.25-4R	5.3	8.0	0.55	4000	40000	10.5		19.0	2.76	600	6000			
	CH1.25-5R	6.4	11.6	0.55	4000	40000	13.0		30.0	3.05	500	5000			
	CH1.25-6R	8.4		0.87	2000	20000	15.0			13.32	250	2500			
	CH1.25-8R	10.5	13.6	0.87	2000	20000	17.0		8.88	250	2500				
	CH1.25-10R	13.0	19.0	1.05	1500	15000	19.0		9.77	250	2500				
	CH1.25-12R	2	5.5	2.3	0.56	3000	30000		14	12.0	CH14-4R	4.3	5.8	3.65	500
CH2-3R	3.7				8.5	0.59	3000	30000			CH14-5R	5.3		3.65	500
CH2-3RM	4.3		6.6		0.56	3000	30000	CH14-6R			6.4	3.65		500	5000
CH2-4RM					0.56	3000	30000	CH14-8RS		8.4	4.37	500	5000		
CH2-4R	5.3		8.5		0.59	3000	30000	CH14-8R			16.5	4.37	400	4000	
CH2-5R	6.4		11.6		0.91	2000	20000	CH14-10R		10.5	4.37	400	4000		
CH2-6R	8.4				0.91	2000	20000	CH14-12R		13.0	22.0	7.01	300	3000	
CH2-8R	10.5		13.6		1.11	1500	15000	CH14-14R		15.0	30.0	15.69	200	2000	
CH2-10R	13.0		19.0		1.61	1000	10000	CH14-16R		17.0	11.21	200	2000		
3.5	CH3.5-4R		4.3		8.0	3.0	0.92	2000		20000	22	12.0	CH22-5RS	5.3	7.7
	CH3.5-5R	5.3	0.92	2000			20000	CH22-6RS	6.4	6.92			300	3000	
	CH3.5-6R	6.4	12.0	1.19	1500		15000	CH22-8RS	8.4	6.92			300	3000	
	CH3.5-8R	8.4	15.0	1.72	1000		10000	CH22-5R	5.3	16.5		7.41	300	3000	
	CH3.5-10R	10.5		1.72	1000		10000	CH22-6R	6.4			7.41	300	3000	
	CH3.5-12R	13.0	19.0	2.31	800		8000	CH22-8R	8.4			7.41	300	3000	
5.5	CH5.5-4R	4.3	9.5	3.4	1.09	1500	15000	38	17.5	CH22-10RS	10.5	9.4	7.41	300	3000
	CH5.5-5R	5.3			1.09	1500	15000			CH22-10R	10.5		7.5	200	2000
	CH5.5-6R	6.4	12.0		1.33	1500	15000			CH22-12R	13.0		22.0	9.11	200
	CH5.5-8R	8.4	15.0		1.7	1000	10000		CH22-14R	15.0	30.0		18.16	150	1500
	CH5.5-10R	10.5			1.7	1000	10000		CH22-16R	17.0			13.97	150	1500
	CH5.5-12R	13.0	19.0		2.36	700	7000		CH22-18R	19.0			20.96	150	1500
8	CH8-4R	4.3	12.0	4.5	2.2	800	8000	38	15.3	CH38-6RS	6.4	9.4	10.36	200	2000
										CH38-8RS	8.4		10.36	200	2000
										CH38-10RS	10.5		10.36	200	2000



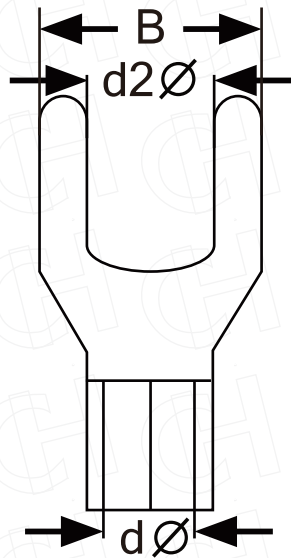
正規格  
圓形裸端子  
NON-INSULATED  
RING TERMINALS



ITEM NO.	d2Ø	±0.30mm		牌價 TWD	每盒數量	每件數量	ITEM NO.	d2Ø	±0.30mm		牌價 TWD	每盒數量	每件數量			
		B	dØ						B	dØ						
38	CH38-6R	6.4	20.0	9.4	12.2	150	1500	80	CH80-14R	15.0	32.0	14.7	41.59	50	500	
	CH38-8R	8.4			12.2	150	1500		CH80-16R	17.0			29.71	50	500	
	CH38-10R	10.5			12.2	150	1500		CH80-18R	19.0			41.59	50	500	
	CH38-12R	13.0			12.2	150	1500		CH80-20R	21.0			41.59	50	500	
	CH38-14R	15.0	24.17	100	1000	CH80-22R	23.0		41.59	50			500			
	CH38-16R	17.0	30.0	16.11	100	1000	100		CH100-6R	6.4			26.5	15.0	32.01	50
	CH38-18R	19.0		24.17	100	1000		CH100-8R	8.4	32.01	50	500				
	CH38-20R	21.0		24.17	100	1000		CH100-10R	10.5	32.01	50	500				
60	CH60-6R	6.4	20.0	11.4	16.22	100		1000	CH100-12R	13.0	32.0	15.0	32.01		50	500
	CH60-8R	8.4			16.22	100		1000	CH100-8RL	8.4			49.92		40	400
	CH60-10R	10.5			16.22	100		1000	CH100-10RL	10.5			49.92		40	400
	CH60-12R	13.0			16.22	100		1000	CH100-12RL	13.0			49.92		40	400
	CH60-14R	15.0	32.0	23.41	80	800		CH100-14R	15.0	49.92	40		400			
	CH60-16R	17.0		21.28	80	800		CH100-16R	17.0	35.66	40		400			
	CH60-18R	19.0		31.92	80	800		CH100-18R	19.0	39.23	40		400			
	CH60-20R	21.0		31.92	80	800	CH100-20R	21.0	49.92	40	400					
	CH60-22R	23.0		31.92	80	800	CH100-22R	23.0	49.92	40	400					
	70	CH70-6R		6.4	22.5	13.3	19.04	80	800	150	CH150-6R		6.4	36.0	19.7	71.88
CH70-8R		8.4	19.04	80			800	CH150-8R	8.4		60.82	30	300			
CH70-10R		10.5	19.04	80			800	CH150-10R	10.5		58.06	30	300			
CH70-12R		13.0	19.04	80			800	CH150-12R	13.0		55.29	30	300			
CH70-14R		15.0	32.0	34.38	70	700	CH150-14R	15.0	71.88		30	300				
CH70-16R		17.0		34.38	70	700	CH150-16R	17.0	60.82		30	300				
CH70-18R		19.0		34.38	70	700	CH150-8RL	8.4	85.19		30	300				
CH70-20R		21.0		34.38	70	700	CH150-10RL	10.5	85.19		30	300				
CH70-22R		23.0		34.38	70	700	CH150-12RL	13.0	85.19		30	300				
80		CH80-6R		6.4	27.0	14.7	25.23	70	700		CH150-14RL	15.0	38.2			21.5
	CH80-8R	8.4	25.23	70			700	CH150-16RL	17.0	85.19	30	300				
	CH80-10R	10.5	25.23	70			700	180	CH180-8R	8.4	79.69	30		300		
	CH80-12R	13.0	25.23	70			700		CH180-10R	10.5	79.69	30		300		
	CH80-8RL	8.4	41.59	50	500	CH180-12R	13.0		73.05	24	240					
	CH80-10RL	10.5	41.59	50	500	CH180-14R	15.0		73.05	30	300					
	CH80-12RL	13.0	32.0	41.59	50	500	CH180-16R	17.0	73.05	30	300					



正規格  
叉型裸端子  
NON-INSULATED  
SPADE TERMINALS



ITEM NO.		d2Ø	±0.30mm		牌價 TWD	每盒數量	每件數量
			B	dØ			
1.25	CH1.25-3YS	3.7	5.7	1.7	0.48	4000	40000
	CH1.25-3Y		6.2		0.48	4000	40000
	CH1.25-4YS	4.3	6.4		0.48	4000	40000
	CH1.25-4Y		7.2		0.48	4000	40000
	CH1.25-5Y	5.3	8.0		0.51	4000	40000
	CH1.25-6Y	6.4	10.7		0.69	2500	25000
2	CH2-3YS	3.7	5.7	2.3	0.55	3000	30000
	CH2-3Y		6.2		0.55	3000	30000
	CH2-4YS	4.3	6.4		0.55	3000	30000
	CH2-4Y		7.2		0.55	3000	30000
	CH2-5Y	5.3	8.0		0.55	3000	30000
	CH2-6Y	6.4	10.7		0.74	2000	20000
3.5	CH3.5-3YS	3.7	6.4	3.0	0.9	2000	20000
	CH3.5-3Y		7.4		0.9	2000	20000
	CH3.5-4YS	4.3	7.0		0.9	2000	20000
	CH3.5-4Y		8.0		0.9	2000	20000
	CH3.5-5Y	5.3	8.0		0.9	2000	20000
	CH3.5-6Y	6.4	10.8		1.21	1000	10000
5.5	CH5.5-3YS	3.7	7.2	3.4	1.05	2000	20000
	CH5.5-3Y		8.2		1.05	2000	20000
	CH5.5-4YS	4.3	7.2		1.05	2000	20000
	CH5.5-4Y		8.2		1.05	1500	15000
	CH5.5-5Y	5.3	9.0		1.05	1500	15000
	CH5.5-6Y	6.4	10.8		1.25	1200	12000
8	CH8-4Y	4.3	8.2	4.5	2.11	800	8000
	CH8-5Y	5.3	9.0		2.11	800	8000
	CH8-6Y	6.4	12.0		2.11	800	8000
14	CH14-5Y	5.3	12.0	5.8	4.03	500	5000
	CH14-6Y	6.4			3.61	500	5000
22	CH22-4Y	4.3	12.0	7.7	8.15	300	3000
	CH22-5Y	5.3			8.89	300	3000
	CH22-6Y	6.4			7.78	300	3000
	CH22-8Y	8.4			7.41	300	3000

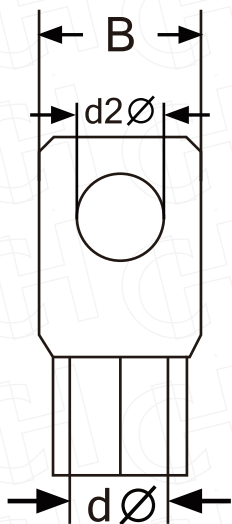




正規格

方形裸端子

NON-INSULATED  
CB TERMINALS

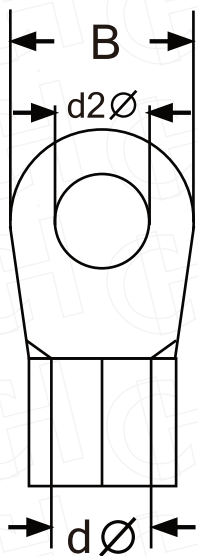


ITEM NO.		d2Ø	±0.30mm		牌價 TWD	每盒數量	每件數量
			B	dØ			
30	CB30-8	8.4	12.5	8.7	8.5	200	2000
	CB30-10	10.5	14.5		8.5	200	2000
38	CB38-6S	6.4	13.5	9.7	9.8	200	2000
	CB38-8S	8.4			9.33	200	2000
	CB38-8		16.0		9.83	200	2000
	CB38-10	10.5			9.83	200	2000
50	CB50-8	8.4	16.0	10.3	13	150	1500
	CB50-10	10.5			13	150	1500
	CB50-12	13			13	150	1500
60	CB60-8	8.4	16.0	11.4	14.34	100	1000
	CB60-10	10.5			14.34	100	1000
	CB60-12	13	18.0		14.34	100	1000
80	CB80-8	8.4	21.0	14.7	23.7	70	700
	CB80-10	10.5			23.7	70	700
	CB80-12	13			23.7	70	700
100	CB100-8	8.4	22.0	16.7	28.41	50	500
	CB100-10	10.5			28.41	50	500
	CB100-12	13			28.41	50	500
125	CB125-10	10.5	22.0	18.2	36.33	50	500
	CB125-12	13			36.33	50	500
150	CB150-10S	10.5	22.0	19.7	49.37	30	300
	CB150-12S	13			49.37	30	300
	CB150-8	8.4	27.0	21.0	51.84	30	300
	CB150-10	10.5			49.37	30	300
	CB150-12	13			49.37	30	300
180	CB150-16	17			49.37	30	300
	CB180-10	10.5	28.5	21.0	61.97	30	300
	CB180-12	13			59.02	30	300
CB180-16	17	28.5	64.92		30	300	
200	CB200-10	10.5	33.0	24.0	87.72	20	200
	CB200-12	13			83.54	20	200
	CB200-16	17			91.89	20	200

ITEM NO.		d2Ø	±0.30mm		牌價 TWD	每盒數量	每件數量
			B	dØ			
325	CB325-12	13	37.0	28.6	125.5	12	120
	CB325-16	17			125.5	12	120
	CB325-18	19			150.6	12	120
	CB325-20	21			150.6	12	120



正規格  
圓形裸端子  
NON-INSULATED  
RING TERMINALS



ITEM NO.	d2Ø	±0.30mm		牌價 TWD	每盒數量	每件數量	
		B	dØ				
180	CH180-8RL	8.4	38.5	21.0	104.14	25	250
	CH180-10RL	10.5			104.14	25	250
	CH180-12RL	13.0			104.14	25	250
	CH180-16RL	17.0			104.14	25	250
	CH180-18R	19.0			104.14	25	250
	CH180-20R	21.0			104.14	25	250
	CH180-22R	23.0			104.14	25	250
	CH180-24R	25.0			104.14	25	250
	CH180-27R	28.0			104.14	25	250
200	CH200-8R	8.4	43.7	24.0	100.68	16	160
	CH200-10R	10.5			100.68	16	160
	CH200-12R	13.0			91.53	16	160
	CH200-14R	15.0			96.11	16	160
	CH200-16R	17.0			96.11	16	160
	CH200-8RL	8.4			141.56	15	150
	CH200-10RL	10.5	141.56	15	150		
	CH200-12RL	13.0	108.89	15	150		
	CH200-14RL	15.0	119.78	15	150		
	CH200-16RL	17.0	119.78	15	150		
	CH200-18R	19.0	119.78	15	150		
	CH200-20R	21.0	108.89	15	150		
	CH200-22R	23.0	130.67	15	150		
	CH200-24R	25.0	130.67	15	150		
325	CH325-8R	8.4	50.0	28.0	154.79	12	120
	CH325-10R	10.5			140.72	12	120
	CH325-12R	13.0			140.72	12	120
	CH325-14R	15.0			168.86	12	120
	CH325-16R	17.0			147.76	12	120
	CH325-8RL	8.4			190.45	12	120
	CH325-10RL	10.5			190.45	12	120
	CH325-12RL	13.0			158.71	12	120
	CH325-14RL	15.0			190.45	12	120
	CH325-16RL	17.0			158.71	12	120

ITEM NO.	d2Ø	±0.30mm		牌價 TWD	每盒數量	每件數量	
		B	dØ				
325	CH325-18R	19.0	50.0	28.0	158.71	12	120
	CH325-20R	21.0			182.52	12	120
	CH325-22R	23.0			190.45	12	120
	CH325-24R	25.0			190.45	12	120
	CH325-27R	28.0			190.45	12	120