

MLS-202



MLS-202 is the EoDSL/EoC(Ethernet over DSL/Coax Network)

bridge that efficiently extends 10/100 Ethernet circuits to 2 wire-Networking LAN for Internet and Intranet access. Over 915 meters (3,000feet) at 50/80Mbps using existing phone/coax wire.

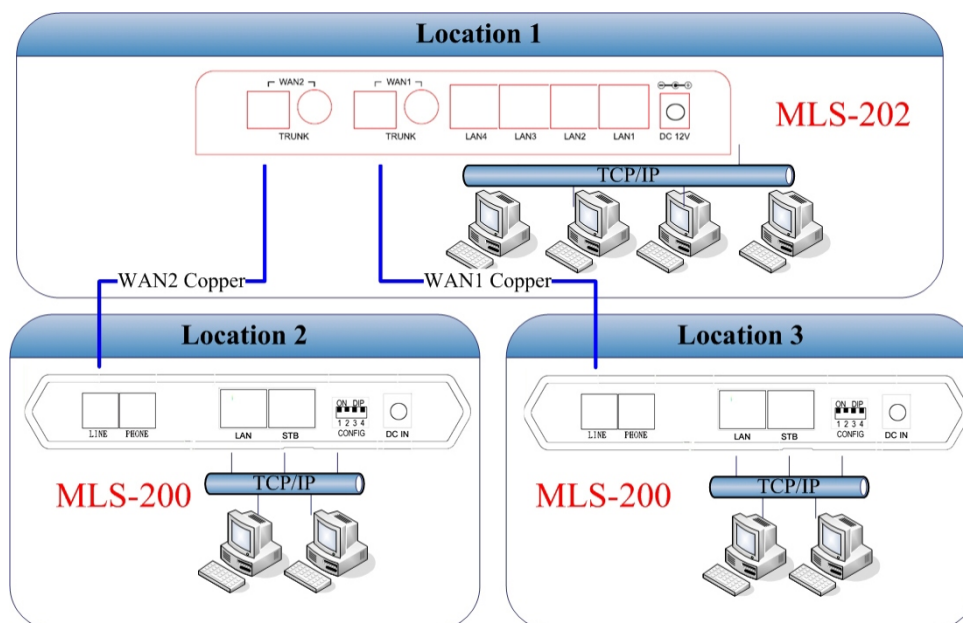
This modem will allow Ethernet connectivity in existing facilities without pulling extra cable. This is perfect solution to Ethernet on the factory floor where systems have been upgraded from slower serial communication to Ethernet networking. Installation is easy with a single switch setting. One end is set for local and the other remote. This modem is used in phone/coax wire to extend Ethernet connectivity over existing phone/coax wire.

Key Features

- ◆ High-Speed 100/95Mbps communications link over existing phone line cable, Asymmetrical on EoDSL
- ◆ 50Mbps @ 915 meters (3,000feet), reach down to 20Mbps @ about 1.7Km(5,600feet)
- ◆ Operates transparent to high layer protocols such as TCP/IP
- ◆ Auto-MDIX and Auto-sensing 10Base-T or 100Base-TX and Full or Half-Duplex on the Ethernet port
- ◆ Plug and Play design for simple installation, single DIP switch for configuration.
- ◆ Status LEDs for simple monitoring of the device and connection status
- ◆ Local to multi-point connection over copper/coax wire

Applications

- ◆ Extend LAN connectivity to a remote site or between buildings
- ◆ Connect Ethernet over the different Room over existing house's phone/coax line infrastructure
- ◆ Connect new controller technology on the factory floor using existing wiring
- ◆ Extend Ethernet connectivity from a backbone network to an isolated location via copper/coax wire
- ◆ Transmit Video and traffic controller information over existing copper/coax wire



MLS-202/C

2WAN, 4*10/100 TX Ethernet Extender over Copper/Coax Line

Technical Specifications

Network Standards:

- ◆ IEEE802.3 10BASE-T, 10Mbit/s
- ◆ IEEE802.3u 100BASE-TX, Fast Ethernet at 100Mbit/s, Auto-negotiation
- ◆ IEEE802.3x Full Duplex and Flow Control

Protocol:

- ◆ Transparent to higher layer protocols

Connectors:

- ◆ Fast Ethernet : Four RJ45 Connectors
- ◆ RJ11 : Two RJ11 Female Connectors , One for WAN1 Line , the other WAN2 Line
- ◆ Coax : (option)Two Coax Female Connectors , One for WAN1 DATA , the other WAN2 DATA

Transmission Speed and Distance:

- ◆ Within a distance of 300 meters maximum speed of 100/95Mbps
- ◆ Up to 5,600 Feet (-176dBm/Hz Noise Floor)

Fast Ethernet Interface:

- ◆ 10/100 Mbps
- ◆ MDI/MDI-X Auto Crossover

Network Management:

- ◆ Diagnosis of DSL link function
- ◆ Line SNR select
- ◆ Line Interleave protect
- ◆ CO/CPE side select able
- ◆ Band Plan profile select able

Indicators:

- ◆ Power LED
- ◆ LAN1 Link/Act LED
- ◆ LAN2 Link/Act LED
- ◆ LAN3 Link/Act LED
- ◆ LAN4 Link/Act LED
- ◆ WAN1 Line CPE/CO LED
- ◆ WAN1 Line Link/Act LED
- ◆ WAN2 Line CPE/CO LED
- ◆ WAN2 Line Link/Act LED

Environmental Conditions:

- ◆ Operating Temperature : 0°C ~ 55°C (32°F~122°F)
- ◆ Storage Temperature : -10°C ~ 65°C (14°F~149°F)
- ◆ Operating Humidity : 10% ~ 90% , Non-condensing

Power Requirement:

- ◆ External Power Supply : 12V/1A
- ◆ Power Consumption : < 8 Watts

Emissions Compliance:

- ◆ FCC part 15 Class B, CE Mark

Ordering Information

MLS-202/C: 2WAN, 4*10/100 TX Ethernet Extender over Copper/Coax Line

MLS-200C: 1WAN, 2 *10/100 TX Ethernet Extender over Coax Line

MLS-200: 1 WAN, 2 *10/100 TX Ethernet Extender over Copper Line

Email: more_info@minksys.com