

一民塑膠股份有限公司
日憶企業有限公司

公司簡介

穩健踏實
共創未來

一民塑膠股份有限公司：台灣新北市五股區御史路34號

TAIWAN (INJECT) ADD: No.34, Yushi Rd., Wugu Dist., New Taipei City 248, Taiwan
(R.O.C.)

日憶企業有限公司：台灣新北市五股區御史路34-1號

TAIWAN (TOOLING) ADD: No.34-1, Yushi Rd., Wugu Dist., New Taipei City 248, Taiwan
(R.O.C.)



Registration No 043-A

The use of the Accreditation Mark indicates accreditation in respect of those activities covered by the accreditation certificate number 043



Certificate of Registration

This certificate has been awarded to
I MING PLASTIC INDUSTRIAL CO., LTD.

No. 34, Yu-Shih Road,
Wu-Ku Hsiang,
Taipei Hsien,
Taiwan, R.O.C.

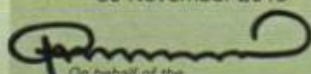
in recognition of the
organization's Quality System which complies with

ISO 9001:2008

The scope of activities covered by this certificate are defined below

**MANUFACTURE OF PLASTIC INJECTION PARTS FOR USE IN
COMPUTER PERIPHERAL**

Certificate Number: 4448 Issue No. 6
Date of Issue: 01 December 2010 (21/11/01)
Expiry Date: 30 November 2013
Issued by:



On behalf of the
Schemes Manager



URS is a member of Registrar of Standards (Holdings) Limited.

品質政策(Quality Policy):

穩健踏實 共創未來
一流品質 一流服務

Steady and dependable create a better
First-class quality first-class

管理承諾(Management Commitment):

DOUBLE “ C & I & S ”

完全細心(Carefulness)於每個製程，用心於每個產品，生產沒有任何瑕疵(Clearness)之產品為品管前題動作，並以(Innovative)技術創新、生產流程合理並持續研發新的製程以達(International)國際化之品管理念，並有完善之客訴管道。

服務(Service)快速，交期準確，配合客戶全力付出，而使客戶滿意(Satisfied)為一民之最終目標

Completely careful (Carefulness) in each process, the intentions of each product, the production does not have any flaws (Clearness) product quality control before the title action, and (of Innovative) technological innovation, production process and reasonable and continuous development of new processes up to the (international) the internationalization of the concept of quality control, and improve the pipeline of customer complaints.

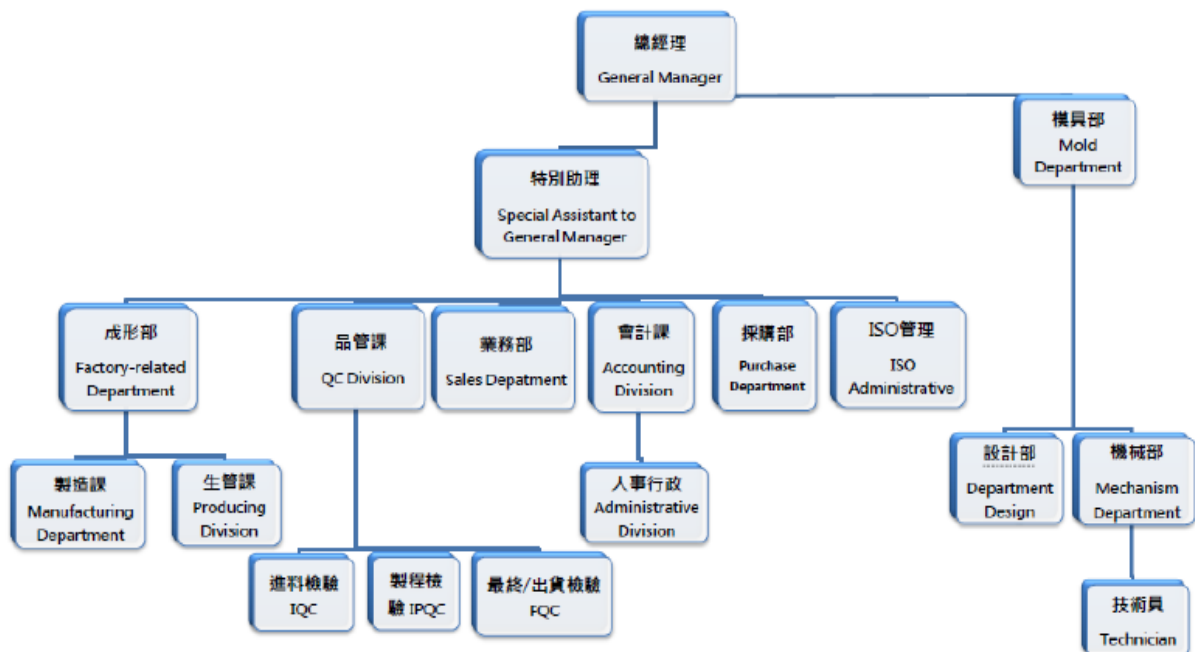
Service (Service) is fast, accurate delivery to meet customers' full pay, and make customer satisfaction (Satisfied) Yimin of the ultimate goal.

品質承諾(Commitment to quality):

追求卓越，持續改善，以提供客戶滿意之產品與服務

Pursuit of excellence, continuous improvement, to provide customer satisfaction of and services

管理組織表(Management organization chart):



一民塑膠股份有限公司產品概略(The product takes a little)



冷熱循環機

Thermocycling Machine



CHASSIS



遙控玩具、天燈
Remote control toys、
sky lanterns



鑽石機

Diamond Machine



血氧噴霧器
Oxygen nebulizer



包膠射出



銅釘埋射
Copper nails bury radio



MONTIOR



醫療儀器外殼
Medical equipment housing



行動電源外殼
Mobile power supply enclosure

公司背景COMPANY PROFILE

一民塑膠股份有限公司由許萬生先生,創立於1988年,從事各項塑膠成型以及模具開發,經過多年不斷發展,深得客戶信賴及信任,以專業的設計,穩定的品質以及具彈性之配合度滿足業界之需求.

I Ming plastic Industrial Co., Ltd was established in year 1988 by Mr. Hsu Wan Sheng , specializes in tooling and inject development, design and fabrication. The company has grown to serve customers and has earned a reputation for flawless services in the professional design skills.

公司概述 COMPANY BACKGROUND

負責人:許萬生

(成型廠) 地址:

新北市五股區御史路34號

電話:886-2-2293-5212

傳真:886-2-2293-0406

統一編號:22805303

E-MAIL:

iming11@ms39.hinet.net

(模具廠) 地址:

新北市五股區御史路34-1號

CHAIRMAN: HSU WAN SHENG

TAIWAN (INJECT) ADD:

No.34-1, Yushi Rd., Wugu Dist., New Taipei City 248, Taiwan (R.O.C.)

TEL: 886-2-2293-5212

FAX: 886-2-2293-0406

REGISTERED NO.: 22805305

EMAIL ACCESS.:

iming11@ms39.hinet.net

TAIWAN (TOOLING) ADD:

No.34-1, Yushi Rd., Wugu Dist., New Taipei City 248, Taiwan (R.O.C.)

組織概況(Organizational Profile)

職 稱	人 數	累 計
主管人員	3	3
管理幹部	3	6
行政人員	3	9
品管人員	2	11
技術人員	4	15
作業人員	12	27
司機人員	1	28
模具人員	2	30

往來配合客戶(Contacts with the customers)

虹光精密工業股份有限公司 → 掃描器、事務機

巨一科技股份有限公司 → IPOD 周邊電子設備

利政科技股份有限公司 → 醫療級生技儀器

信邦電子股份有限公司 → 醫療冷熱循環機、噴霧器

有力國際有限公司 → All in one 電腦

慶銓企業有限公司 → TOYOTA 電鍍鉻車身飾條

神鐳光電股份有限公司 → 掃描把手(包射)

鴻業工業有限公司 → 行動電源

鋒成科技股份有限公司 → 科技玩具、遙控玩具

射出成型機械設備一覽表

Injection molding machinery and equipment List

項次 (Item)	設備名稱 (Device name)	規格 (Specification)	廠牌 (Label)	數量 (Quantity)
1	射出成型機 (Injection Molding Machine)	1000 TON A級料管 (Class A Barrel)	舜展 (Shuenn Jaan)	1
2	射出成型機 (Injection Molding Machine)	550 TON A級料管 (Class A Barrel)	舜展 (Shuenn Jaan)	1
3	射出成型機 (Injection Molding Machine)	300 TON A級料管 (Class A Barrel)	舜展 (Shuenn Jaan)	1
4	射出成型機 (Injection Molding Machine)	220TON A級料管 (Class A Barrel)	舜展 (Shuenn Jaan)	2
5	射出成型機 (Injection Molding Machine)	180 TON A級料管 (Class A Barrel)	舜展 (Shuenn Jaan)	1
6	射出成型機 (Injection Molding Machine)	160 TON A級料管 (Class A Barrel)	舜展 (Shuenn Jaan)	1
7	射出成型機 (Injection Molding Machine)	140TON A級料管 (Class A Barrel)	舜展 (Shuenn Jaan)	1
8	射出成型機 (Injection Molding Machine)	110TON A級料管 (Class A Barrel)	舜展 (Shuenn Jaan)	1
9	射出成型機 (Injection Molding Machine)	120 TON A級料管 (Class A Barrel)	舜展 (Shuenn Jaan)	2
10	射出成型機 (Injection Molding Machine)	100 TON A級料管 (Class A Barrel)	舜展 (Shuenn Jaan)	1
11	射出成型機 (Injection Molding Machine)	70 TON A級料管 (Class A Barrel)	舜展 (Shuenn Jaan)	1



品 管 檢 測 設 備
Product pipe detection equipment

項次 (Item)	設備名稱 (Device name)	規格 (Specification)	廠牌 (Label)	數量 (Quantity)
1	二次元量測 (Quadratic elements measured)		台 超(V-TECH)	1
2	色差機 (Color machine)	分光測色計 (Spectrophotometer)	MINOLTA CM-2600D	1
3	平台 (Platform)	300*600mm	尚 豪	1
4	塊規 (Gauge Block)			1
5	高度規 (Height gage)	0-600mm	MITUTOYO	2
6	游標卡尺 (Calipers)	600m/m 300m/m 150m/m	MITUTOYO	6
7	光澤機 (Shiny machine)		廣 柏	2
8	厚薄規 (Feeler)	0.15~1.5mm	NOVA	2
9	分厘卡 (Micrometer)	0-25mm	MITUTOYO	1
10	扭力起子 (Torque screwdriver)	20KGF	KANON	1
11	推拉力計 (Pushing or pulling force)	0-20KGF	HANDY PUSH AK-20 PULL	1
12	百分表 (Dial indicator)	0.1mm	MITUTOYO	1
13	標準白板 (Standard whiteboard)		MINOLTA	1
14	電子秤 (Electronic scales)	0.5-12KG	高 偉	2



品管量測室



二次元量測



高度規量測



色差機測色



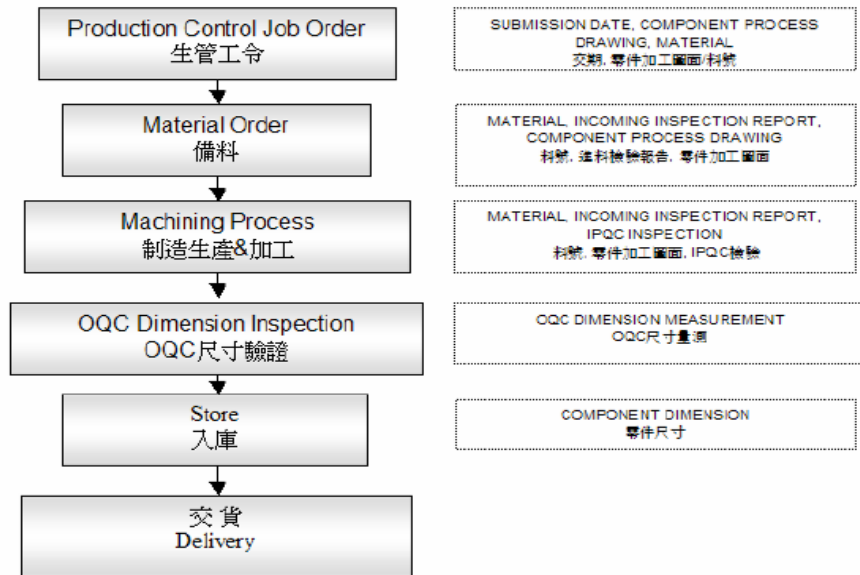
光澤機測光澤度

源頭做的好，製造沒煩惱

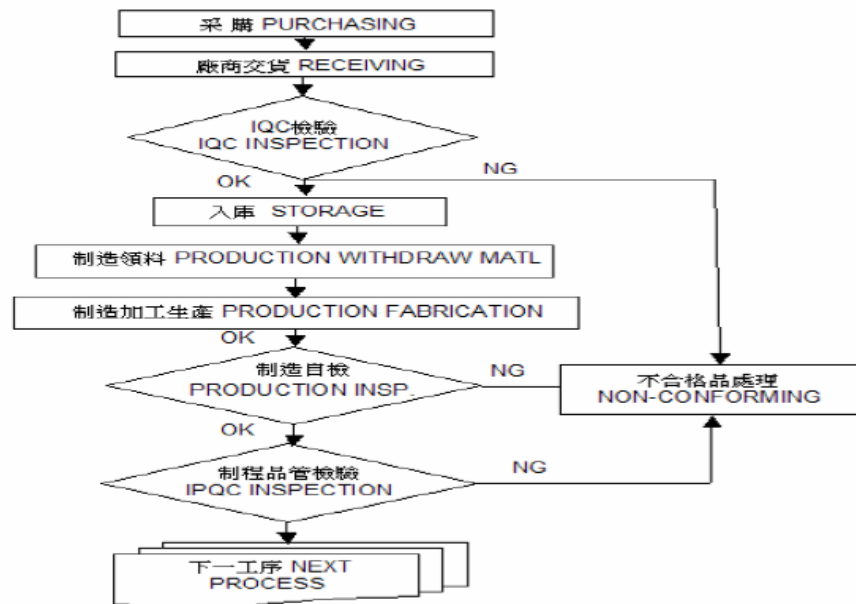
品質管得好，客訴異常少

Source well, Manufacturing, No worries
Quality tube, Abnormal few customer

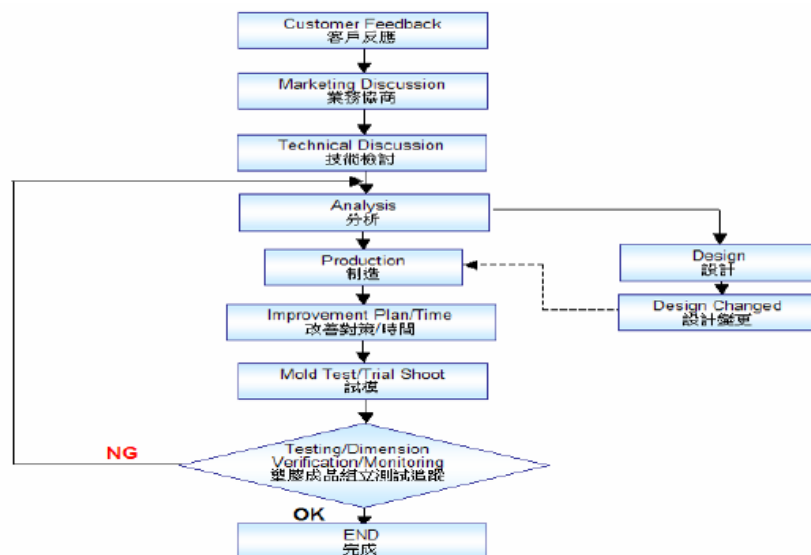
製造流程 PRODUCTION FLOW CHART



品質管理 QUALITY CONTROL FLOW CHART



客訴處理流程 CUSTOMER FEEDBACK PROCESS FLOW



模具設備一覽表

Mold equipment a view table

項次 (Item)	設備名稱 (Device name)	規格 (Specification)	廠牌 (Label)	數量 (Quantity)
1	銑床 (Milling machine)	3.0# 2.0#	常準	2
2	銑床 (Milling machine)	1.7# 1.5#	第一	2
3	銑床 (Milling machine)	3.0#	春日	2
4	放電機 (Put Motor)	30A 50A	慶鴻	3
5	研磨機 (Grinding machine)	平面研磨機 (Plane grinding machine)	上一	1
6	研磨機 (Grinding machine)	成型研磨機 (Forming grinder)	宇青	1
7	研磨機 (Grinding machine)	成型研磨機 (Forming grinder)	大同	1
8	車床 (Lathe)			1
9	鑽床 (Drilling machine)			1
10	磨刀機 (Knife Sharpener)			1
11	天車 (Overhead traveling crane)	2TON		2
12	電腦設備 (Computer equipment)	列表機 製圖機 (List of machine Drawing machine)	惠普	1

