

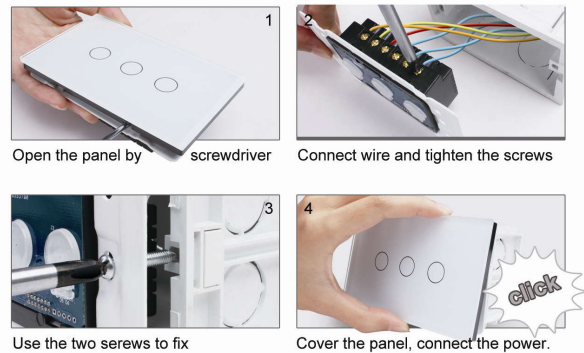
## WARNING

Read the instruction carefully before installation.  
Manufacturer is not responsible for any damage caused by your wrong operation.

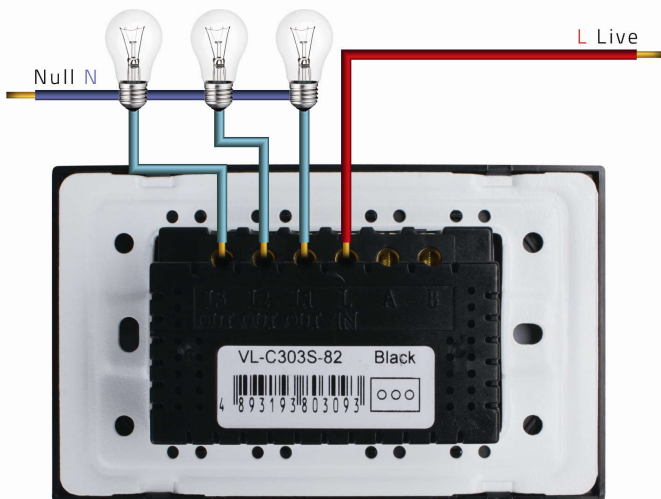
### Special Notes:

- 1.The electric Power should be off during installation.
- 2.Wiring strictly must be done according to the wiring diagrams.
- 3.Each load capacity is minimum 15W and maximum 1000W.
- 4.The size of the installing screw hole is 60mm, and the dimension of mounting box is at least 110mm\*60mm\*50mm.
- 5.If the touch testing is operated without the glass panel, please shut down the power first, then fix the switch and install the glass panel, connect the power at last.

### Installation Diagram:



### The Wiring Diagram of One Way Switch:



### One Way Switch Instruction:

Touch the switch. When lamp is on (black light is red), when it is off (black light is blue).

#### Note:

- 1.If one touch switch hasn't connected any lamps, it is normal that other switch which connected lamps will flash shortly.
2. Wiring diagram is same as diagram 1.

### Timer Switch Instruction:

- 1.Touch the switch, the lamp will be on.
- 2.The lamp will return off automatically after 30 seconds.
- 3.Touch it again when it is on, the back light will flash to inform, it is relocking for another 30 seconds.

Note: Wiring diagram is same as Diagram 1.

### Dimmer Switch Instruction:

- 1.Touch it shortly, the lamp is on/ off.
- 2.Keep touching, the lamp will dim up/ down gradually.
- 3.With memory function, it will remember the brightness of last operation.

### Note:

- 1.Only suit for the dimmable lamp, like incandescent lamps, dimmable spotlights.
- 2.The load power should be lower than 500W, it is normal that the switch inside get a little warm when the lamp is on.
- 3.Wiring diagram is same as Diagram 1.

### The Wiring Diagram of Two Way Switch (Intermediate Switch):

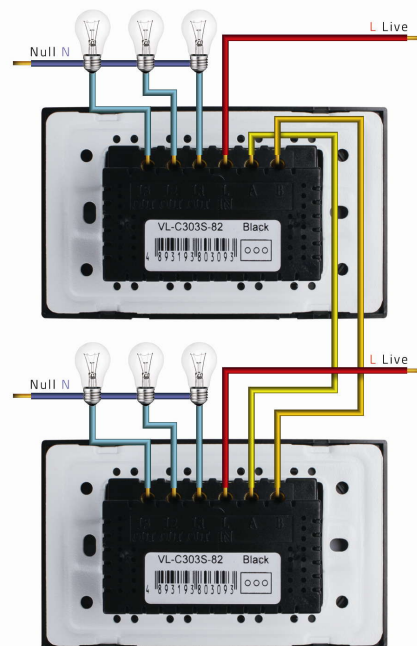


Diagram 2

### Note:

- 1.When the two way switch connect with others, any one switch connected with live line is enough.
- 2.Lamp can connect with any wire on the switch like L1/L2/L3.
- 3.A from one switch is forbidden to connect B from others, only A to A, B to B.

### Two Way Switch Synchronizing Instruction:

1. Two way switch will only work after being synchronized.
2. Synchronizing steps:

#### First:

Hold a gang of the switch for 5 seconds, let go when you here a "Di" sound or if the backlight flashes.

#### Second:

Touch the other switch, when the backlight flashes, it means the synchronization was successfully completed.

#### 3. Steps to cancel Synchronization:

Hold the gang of either switch for 10 seconds, when you here two "Di" sounds or if the backlight flashes twice, the synchronization was successfully cancelled. Should you let go after the first "Di" sound or after the first flash, the synchronization will not be successfully cancelled. After cancelling the synchronization, the synchronization with the remote will also be cancelled.

### Using the switch:

#### TO TURN ON

Touch the switch panel around the oval to turn on



#### TO TURN OFF

Touch the switch panel around the oval to turn off



### USING THE REMOTE:

Press A, light turns on, press A again the lamps turns off



A=1 gang

B=2 gang

C=3 gang

D=All off

### Small Remote Matching Instruction:

First: Touch the button of switch for 5 seconds.

Second: Take away hand when hear the sounds of "Di"

Third: Press the button of remote (like button A).

Fourth: It means the success of matching when hearing the sounds of "Di".

### Note:

1. To cancel the synchronization: press the gang of switch for 10 seconds, when you hear two "Di" sounds the synchronization was successfully cancelled.
2. Dimmer Function of small remote:
  - a. After synchronizing the remote, the functions of the buttons are as follows: A-On/Off for one switch, B-On/Off for another switch, C-Dim up, D-Dim Down, C&D buttons control the last handled switch gang;
  - b. This function only feasible with one remote control dimmer switch.

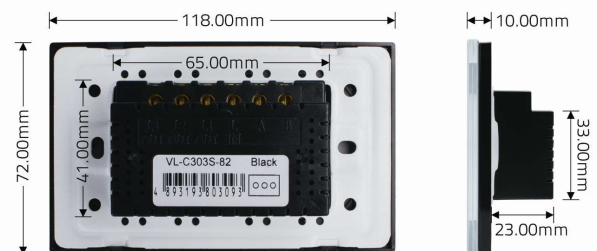
### Technical Parameters:

1. Dimension: 118mm\*72mm\*33mm
2. Voltage: AC110-250V/50Hz-60Hz.
3. Electrical current: 5A(dimmer switch 2A).
4. Load power: 15W~1000W/load  
Dimmer switch: 25W~500W/load
5. Energy consumption: <0.1mA.
6. Operation environment: -30~70°C, less than 95%RH.
7. Longevity: 100,000 times operation.

### Note:

The switch is not suitable for the following lamp:

1. Inductive ballast fluorescent.
2. Load power is lower than 15W.



### Remark:

Normally, if the switch can't work well, please shut down the power for 1 minutes, then turn on it again.