

## EL-C216-OR

1/3" Sony Super HAD II CCD, with On-Screen-Display for Customized Setup . Motorized IR Filter Makes It a Real Day/Night Camera. Minimum Illumination up to 0.01Lux. Adjustable Shutter Speed Makes it an Ideal Option for License Plate Recognition Camera.



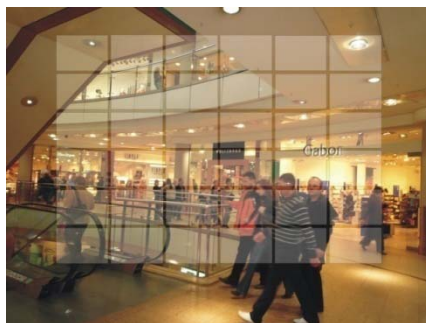
### On-Screen-Display

EL-C216-OR build-in the OSD chipset. It allows the customer to adjust the functions with the push button. The OSD function enables the adjustment to the Shutter Speed, BLC ratio and area. Gain Control, White Balance. It also be able to adjust some advanced functions like Motion, Privacy Masking, Mirror and Gamma Ratio.



### Privacy Masking

EL-C216-OR is able to apply 4 masking area on the image. Each area is programmable with size, position and color setting.

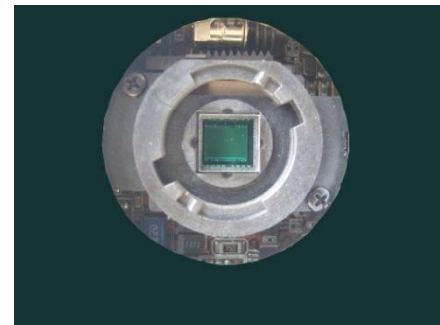


### Back Light Compensation

In order to make it works better with the License Plate Recognition, EL-C216-OR allows user to set the BLC area with up to 64 grid on the image and adjustable ratio to set the image brightness.

## Motorized IR Filter

EL-C216-OR equipped with Solenoid and Filter change technology. This function allows the customer to have true color image at day time. The IR filter will only moves in with the illumination is below 10 Lux. It enable EL-C216-OR a true Day/night Camera.



## Adjustable Shutter Speed

The shutter speed of EL-C216-OR is adjustable. It ranges from 1/60 ( 1/50 to 1/100K). It enables the camera to capture clear License Plate of the vehicle at different speed.



Shutter Speed Fixed at 1/500 Sec



Shutter Speed Fixed at 1/250Sec

## OPTIONAL DEVICE

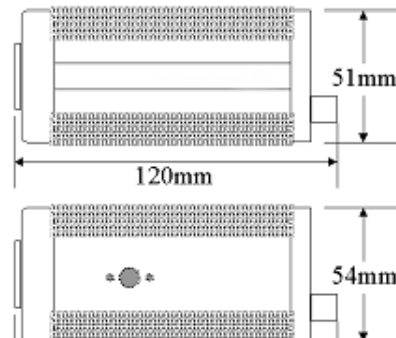
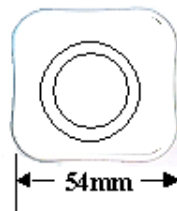


40M IR Outdoor Housing with Heater and Fan



10~120 mm DC Auto Iris Lens

## DIMENSION



## SPECIFICATION

<b>Model</b>	<b>EL-C216-OR</b>
<b>System</b>	NTSC / PAL
<b>Pick-up Device</b>	1/3" Sony Super HAD II® CCD
<b>Active Picture Elements</b>	NTSC: 768(H) x 508(V) / PAL: 752(H) x 582(V)
<b>Horizontal Resolution</b>	520 TV line @ Color Mode, 570TV line @B/W
<b>Minimum Illumination</b>	0.1 Lux @ Color Mode 0.001 Lux @ B/w
<b>Gamma Ratio</b>	More Than 50dB ( Adjustable on OSD)
<b>On-Screen-Display</b>	Lens: Manual, DC Shutter: Fix, Manual, FLK Back Light Compensation: On (with programmable area and ratio) / Off AGC: Off/ On(with Programmable Ratio from 0~255) Adjust: Sharpness, Contrast, CB Gain, CR Gain Function: Camera ID, Mirror ( Horizontal / Vertical), Day/Night: Color, B/W, Auto( with Programmable Delay) Motion Detection with Programmable Area Privacy: Up to 4 Masks with Programmable Area Gamma Ratio (0.05 ~1.0) Language: ( Chinese, English, Japanese)
<b>Video Output</b>	1.0Vp-p 75 Ohm, BNC
<b>Power Consumption</b>	1.1W (Max)
<b>Lens</b>	CS or C Mount
<b>Operation Environment</b>	-10 °C ~55°C @ 85% Ambient
<b>Power Input</b>	DC 12V with 1.5KV Surge Protection

## MODEL SELECTION

EL-C216-ORP: DC 12V, w/ Motorized IR Filter, PAL

EL-C216-ORN: DC 12V, w/ Motorized IR Filter, NTSC