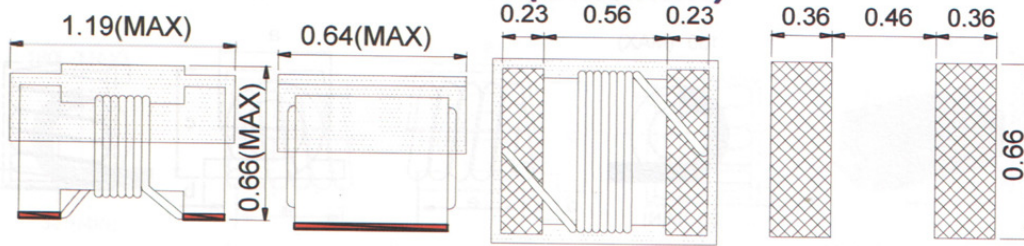




SMD Wire Wound Ceramic Chip Inductors (0402 CP Series)

Mechanical Dimensions: (Unit:mm)

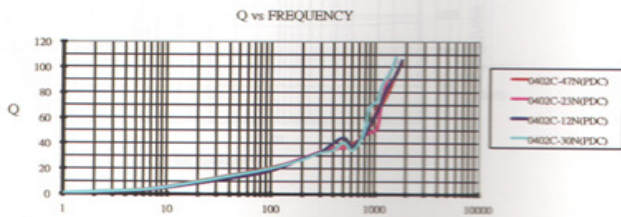
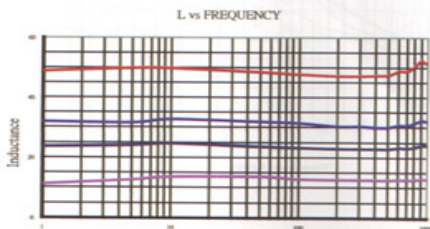


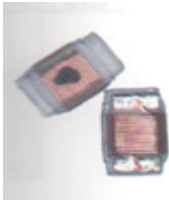
Part No.	Ind.	Inductance Tolerance	Q Min	Test Freq. (MHz)	SRF GHz Min	DCR Ohm Max	Rated Current(mA)
0402CP-1N0□-LFR	1.0	G·J·K	16	250	12.70	0.045	1360
0402CP-1N2□-LFR	1.2	G·J·K	16	250	12.90	0.090	740
0402CP-1N8□-LFR	1.8	G·J·K	16	250	12.00	0.070	1040
0402CP-1N9□-LFR	1.9	G·J·K	16	250	11.30	0.070	1040
0402CP-2N0□-LFR	2.0	G·J·K	16	250	11.10	0.070	1040
0402CP-2N2□-LFR	2.2	G·J·K	19	250	10.80	0.070	960
0402CP-2N4□-LFR	2.4	G·J·K	15	250	10.50	0.068	790
0402CP-2N7□-LFR	2.7	G·J·K	16	250	10.40	0.120	640
0402CP-3N3□-LFR	3.3	G·J·K	19	250	7.00	0.066	840
0402CP-3N6□-LFR	3.6	G·J·K	19	250	6.80	0.066	840
0402CP-3N9□-LFR	3.9	G·J·K	19	250	6.00	0.066	840
0402CP-4N3□-LFR	4.3	G·J·K	18	250	6.00	0.091	700
0402CP-4N7□-LFR	4.7	G·J·K	15	250	4.77	0.130	640
0402CP-5N1□-LFR	5.1	G·J·K	20	250	4.80	0.083	800
0402CP-5N6□-LFR	5.6	G·J·K	20	250	4.80	0.083	760
0402CP-6N2□-LFR	6.2	G·J·K	20	250	4.80	0.083	760
0402CP-6N8□-LFR	6.8	G·J·K	20	250	4.80	0.083	680
0402CP-7N3□-LFR	7.3	G·J·K	20	250	4.80	0.260	680
0402CP-7N5□-LFR	7.5	G·J·K	22	250	4.80	0.100	680
0402CP-8N2□-LFR	8.2	G·J·K	22	250	4.40	0.100	680
0402CP-8N7□-LFR	8.7	G·J·K	18	250	4.10	0.200	480
0402CP-9N1□-LFR	9.1	G·J·K	22	250	4.16	0.100	680
0402CP-9N5□-LFR	9.5	G·J·K	18	250	4.00	0.200	480
0402CP-10N□-LFR	10	G·J·K	21	250	3.90	0.200	480
0402CP-11N□-LFR	11	G·J·K	24	250	3.68	0.120	640
0402CP-12N□-LFR	12	G·J·K	24	250	3.60	0.120	640
0402CP-13N□-LFR	13	G·J·K	24	250	3.45	0.210	440
0402CP-15N□-LFR	15	G·J·K	24	250	3.28	0.170	560
0402CP-16N□-LFR	16	G·J·K	24	250	3.10	0.220	560
0402CP-18N□-LFR	18	G·J·K	25	250	3.10	0.230	420
0402CP-19N□-LFR	19	G·J·K	24	250	3.04	0.200	480
0402CP-20N□-LFR	20	G·J·K	25	250	3.00	0.250	420
0402CP-22N□-LFR	22	G·J·K	25	250	2.80	0.300	400
0402CP-23N□-LFR	23	G·J·K	22	250	2.72	0.300	400
0402CP-24N□-LFR	24	G·J·K	25	250	2.70	0.300	400
0402CP-27N□-LFR	27	G·J·K	24	250	2.48	0.300	400
0402CP-30N□-LFR	30	G·J·K	25	250	2.35	0.300	400
0402CP-33N□-LFR	33	G·J·K	24	250	2.35	0.440	400
0402CP-36N□-LFR	36	G·J·K	24	250	2.32	0.440	320
0402CP-39N□-LFR	39	G·J·K	25	250	2.10	0.550	200
0402CP-40N□-LFR	40	G·J·K	24	250	2.24	0.440	320
0402CP-43N□-LFR	43	G·J·K	25	250	2.03	0.810	100
0402CP-47N□-LFR	47	G·J·K	20	250	2.10	0.830	150
0402CP-51N□-LFR	51	G·J·K	25	250	1.75	0.820	100
0402CP-56N□-LFR	56	G·J·K	22	250	1.76	0.970	100
0402CP-68N□-LFR	68	G·J·K	22	250	1.62	1.120	100
0402CP-82N□-LFR	82	G·J·K	20	250	1.26	1.550	50
0402CP-R18□-LFR	100	G·J·K	20	250	1.16	2.000	30
0402CP-R12□-LFR	120	G·J·K	-	250	1.90	2.200	50

- a. Tolerance : K=±10% ; J=±5% ; G=±2%
- b. Operating Temp:-40°C TO +125°C
- c. For 15°C Temperature Rise.
- d. Inductance & Q measured using the HP4291B.
- e. SRF measured using the HP8753E or HP8720D.

- f. DCR measured using the 502BC milli-ohm meter.
- g. Unspecified values available on request.
- h. Special specification are available for customer's requirement.

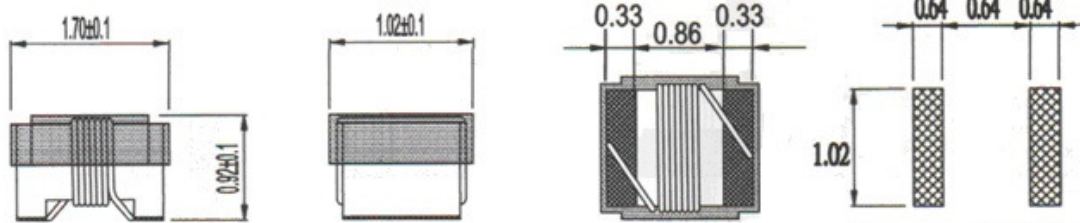
Characteristic Curve





SMD Wire Wound Ceramic Chip Inductors (0603 CP Series)

Mechanical Dimensions: (Unit:mm)



Recommended Patterns

Part No.	Ind.(nH)	Inductance Tolerance	QMin	Test Freq. (MHz)	SRF MHz Min	DCR Ohm Max	Rated Current (mA)	COLOR CODE
0603CP-1N6□-LFR	1.5	K ± J	24	250	12500	0.030	700	BLACK
0603CP-1N8□-LFR	1.8	K ± J	16	250	12500	0.045	700	BROWN
0603CP-2N1□-LFR	2.1	K ± J	20	250	5800	0.005	700	RED
0603CP-2N2□-LFR	2.2	K ± J	20	250	5800	0.005	700	ORANGE
0603CP-3N3□-LFR	3.3	K ± J	20	250	5500	0.070	700	VIOLET
0603CP-3N6□-LFR	3.6	K ± J	22	250	5900	0.063	700	RED
0603CP-3N9□-LFR	3.9	K ± J	22	250	6900	0.080	700	ORANGE
0603CP-4N3□-LFR	4.3	K ± J	22	250	5900	0.063	700	YELLOW
0603CP-4N7□-LFR	4.7	K ± J	20	250	5800	0.116	700	GREEN
0603CP-5N1□-LFR	5.1	K ± J	20	250	5700	0.140	700	BLUE
0603CP-5N6□-LFR	5.6	K ± J	20	250	5800	0.150	700	GRAY
0603CP-6N1□-LFR	6.1	K ± J	25	250	5800	0.110	700	WHITE
0603CP-6N8□-LFR	6.8	K ± J, G	27	250	5800	0.110	700	VIOLET
0603CP-7N5□-LFR	7.5	K ± J, G	28	250	4800	0.106	700	GRAY
0603CP-8N2□-LFR	8.2	K ± J, G	25	250	5800	0.120	700	BLACK
0603CP-8N4□-LFR	8.4	K ± J, G	28	250	4600	0.109	700	RED
0603CP-8N5□-LFR	8.5	K ± J, G	28	250	4600	0.109	700	RED
0603CP-8N7□-LFR	8.7	J, G	28	250	4600	0.109	700	WHITE
0603CP-9N5□-LFR	9.5	J, G	28	250	5400	0.135	700	BLACK
0603CP-10N□-LFR	10	J, G	31	250	4800	0.130	700	BROWN
0603CP-11N□-LFR	11	J, G	33	250	4000	0.086	700	RED
0603CP-12N□-LFR	12	J, G	35	250	4000	0.130	700	ORANGE
0603CP-14N□-LFR	14	J, G	35	250	4000	0.170	700	BROWN
0603CP-15N□-LFR	15	J, G	35	250	4000	0.170	700	YELLOW
0603CP-16N□-LFR	16	J, G	34	250	3300	0.104	700	GREEN
0603CP-18N□-LFR	18	J, G	35	250	3100	0.170	700	BLUE
0603CP-22N□-LFR	22	J, G	38	250	3000	0.190	700	VIOLET
0603CP-24N□-LFR	24	J, G	37	250	2650	0.135	700	GRAY
0603CP-27N□-LFR	27	J, G	40	250	2800	0.220	600	WHITE
0603CP-30N□-LFR	30	J, G	37	250	2250	0.144	600	BLACK
0603CP-33N□-LFR	33	J, G	40	250	2300	0.220	600	BROWN
0603CP-36N□-LFR	36	J, G	38	250	2080	0.250	600	RED
0603CP-39N□-LFR	39	J, G	40	250	2200	0.250	600	ORANGE
0603CP-43N□-LFR	43	J, G	39	250	2000	0.280	600	YELLOW
0603CP-47N□-LFR	47	J, G	38	200	2000	0.280	600	GREEN
0603CP-56N□-LFR	56	J, G	38	200	1900	0.310	600	BLUE
0603CP-68N□-LFR	68	J, G	37	200	1700	0.340	600	VIOLET
0603CP-72N□-LFR	72	J, G	34	150	1700	0.490	400	GRAY
0603CP-82N□-LFR	82	J, G	34	150	1700	0.540	400	WHITE
0603CP-R10□-LFR	100	J, G	34	150	1400	0.580	400	BLACK
0603CP-R11□-LFR	110	J, G	32	150	1350	0.610	300	BROWN
0603CP-R12□-LFR	120	J, G	32	150	1300	0.650	300	RED
0603CP-R15□-LFR	150	J, G	28	150	900	0.920	280	ORANGE
0603CP-R18□-LFR	180	J, G	25	100	900	1.250	240	YELLOW
0603CP-R22□-LFR	220	J, G	25	100	900	1.900	200	GREEN
0603CP-R27□-LFR	270	J, G	24	100	900	2.300	170	BLUE
0603CP-R33□-LFR	330	J, G	24	100	900	2.200	185	VIOLET
0603CP-R39□-LFR	390	J, G	25	100	900	4.350	100	GRAY

a. Tolerance : M=±20% ; K=±10% ; J=±5% ; G=±2% ; F=±1%

b. Operating Temp:-40°C TO +125°C

c. For 15°C Temperature Rise.

d. Inductance & Q measured using the HP4291B.

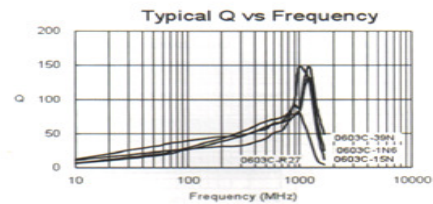
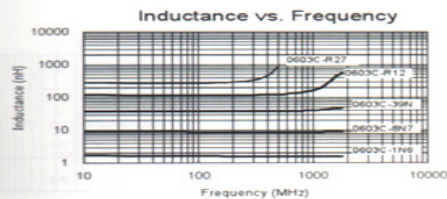
e. SRF measured using the HP8753E or HP8720D.

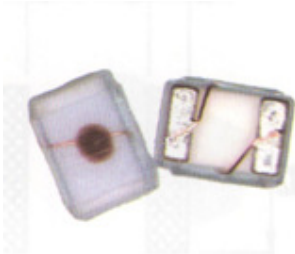
f. DCR measured using the 502BC milli-ohm meter.

g. Unspecified values available on request.

h. Special specification are available for customer's requirement.

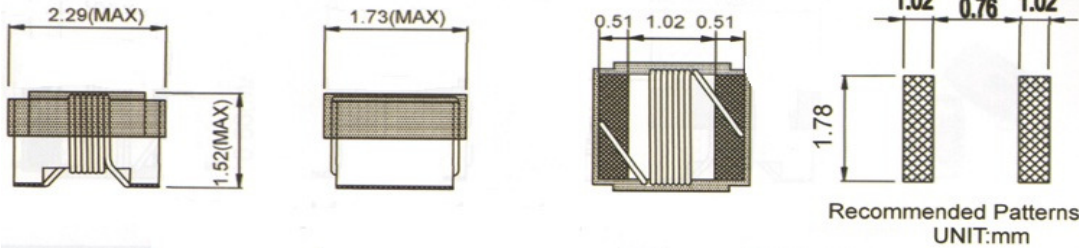
Characteristic Curve





SMD Wire Wound Ceramic Chip Inductors (0805 CP Series)

Mechanical Dimensions: (Unit:mm)



Part No.	Ind.(nH)	Test Freq. (MHz)	Inductance Tolerance	Q Min	Test Freq. (MHz)	SRF MHz Min	DCR Ohm Max	Rated Current (mA)	COLOR CODE
0805CP-2N2-LFR	2.2	1000	K \ J	35	1500	3000	0.08	600	White
0805CP-2N7-LFR	2.7	250	K \ J	35	1000	6000	0.03	600	Brown
0805CP-2N8-LFR	2.8	250	K \ J	80	1000	7900	0.06	800	Gray
0805CP-2N9-LFR	2.9	250	K \ J	50	1000	4700	0.05	600	Blue
0805CP-3N0-LFR	3.0	250	K \ J	65	1500	7900	0.06	800	White
0805CP-3N3-LFR	3.3	250	K \ J	50	1500	7900	0.08	600	Black
0805CP-5N6-LFR	5.6	250	K \ J	65	1000	5500	0.08	600	Violet
0805CP-6N8-LFR	6.8	250	K \ J	50	1000	5500	0.11	600	Brown
0805CP-7N5-LFR	7.5	250	K \ J	50	1000	4500	0.14	600	Green
0805CP-8N2-LFR	8.2	250	K \ J \ G	50	1000	4700	0.12	600	Red
0805CP-10N-LFR	10	250	K \ J \ G	60	500	4200	0.10	600	Red
0805CP-11N-LFR	11	700	K \ J \ G	45	500	3000	0.15	600	Orange
0805CP-12N-LFR	12	250	K \ J \ G	50	500	4000	0.15	600	Orange
0805CP-15N-LFR	15	250	K \ J \ G	50	500	3400	0.17	600	Yellow
0805CP-18N-LFR	18	250	K \ J \ G	50	500	3300	0.20	600	Green
0805CP-22N-LFR	22	250	K \ J \ G	55	500	2600	0.22	500	Blue
0805CP-24N-LFR	24	250	K \ J \ G	50	500	2000	0.22	500	Gray
0805CP-27N-LFR	27	250	K \ J \ G	55	500	2500	0.25	500	Violet
0805CP-33N-LFR	33	250	K \ J \ G	60	500	2050	0.27	500	Gray
0805CP-36N-LFR	36	250	K \ J \ G	55	500	1700	0.27	500	Yellow
0805CP-37N-LFR	37	350	K \ J \ G	40	500	1800	0.27	500	Green
0805CP-38N-LFR	38	350	K \ J \ G	40	500	1800	0.27	500	Blue
0805CP-39N-LFR	39	250	K \ J \ G	60	500	2000	0.29	500	White
0805CP-43N-LFR	43	200	K \ J \ G	60	500	1650	0.34	500	Yellow
0805CP-47N-LFR	47	200	K \ J \ G	60	500	1650	0.31	500	Black
0805CP-56N-LFR	56	200	K \ J \ G	60	500	1550	0.34	500	Brown
0805CP-68N-LFR	68	200	K \ J \ G	60	500	1450	0.38	500	Red
0805CP-82N-LFR	82	150	K \ J \ G	65	500	1300	0.42	400	Orange
0805CP-91N-LFR	91	150	K \ J \ G	65	500	1200	0.48	400	Black
0805CP-R10-LFR	100	150	K \ J \ G	65	500	1200	0.46	400	Yellow
0805CP-R11-LFR	110	150	K \ J \ G	50	500	1000	0.48	400	Brown
0805CP-R12-LFR	120	150	K \ J \ G	50	250	1100	0.51	400	Green
0805CP-R15-LFR	150	100	K \ J \ G	50	250	920	0.56	400	Blue
0805CP-R18-LFR	180	100	K \ J \ G	50	250	870	0.64	400	Violet
0805CP-R22-LFR	220	100	K \ J \ G	50	250	850	0.70	400	Gray
0805CP-R24-LFR	240	100	K \ J \ G	44	250	690	1.00	350	Red
0805CP-R27-LFR	270	100	K \ J \ G	48	250	650	1.00	350	White
0805CP-R30-LFR	300	100	K \ J \ G	25	250	450	1.40	300	Gray
0805CP-R33-LFR	330	100	K \ J \ G	48	250	600	1.40	300	Black
0805CP-R36-LFR	360	100	K \ J \ G	35	250	400	0.90	300	Orange
0805CP-R39-LFR	390	150	K \ J \ G	48	250	560	1.50	290	Brown
0805CP-R43-LFR	430	100	K \ J \ G	25	100	400	1.70	190	White
0805CP-R47-LFR	470	50	K \ J	33	100	375	1.76	250	Violet
0805CP-R56-LFR	560	25	K \ J	23	50	340	1.90	230	Orange
0805CP-R68-LFR	680	25	K \ J	23	50	188	2.20	190	Green
0805CP-R82-LFR	820	25	K \ J	23	50	215	2.35	180	Brown

- a. Tolerance : M=±20% ; K=±10% ; J=±5% ; G=±2% ; F=±1%
- b. Operating Temp:-40°C TO +125°C
- c. For 15°C Temperature Rise.
- d. Inductance & Q measured using the HP4291B.
- e. SRF measured using the HP8753E , or HP8720D .
- f. DCR measured using the 502BC milli-ohm meter.
- g. Unspecified values available on request.
- h. Special specification are available for costumer' s requirement.

Characteristic Curve

