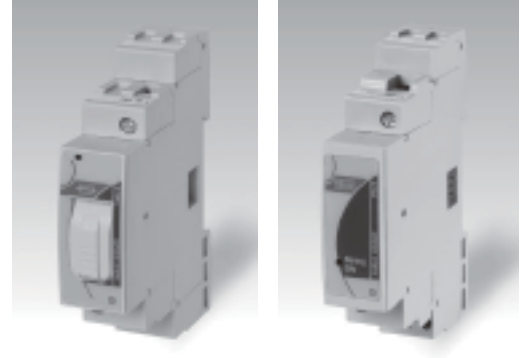


## VIM-S, string measuring unit

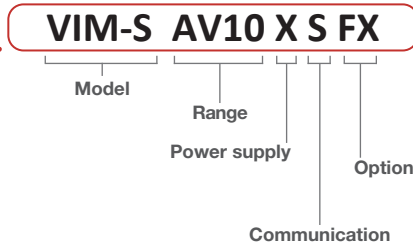
- Direct DC voltage measurement up to 1000V
- Energy measurements : kWh
- Direct DC current measurement up to 16A or up to 30A without fuse
- Instantaneous variables data format : 4 DGTs
- Energies data format : 6 DGT
- Instantaneous variables : V, A, W.
- Accuracy : Class 1 (kWh)  $\pm 0.5$  RDG (current/voltage)
- Auxiliary power supply from VIM-M unit
- String alarm management by means of VIM-M unit only
- Fuse blow detection by means of VIM-M unit only
- PV module connection control by means of VIM-M unit only.
- Integrated 10.3x38mm fuse holder for string protection
- Dimensions : 1-DIN module
- Protection degree (front) : IP40



## Product Description

Variables measuring unit with built-in protection fuse holder (the fuse is not provided); particularly indicated for DC current, voltage, power and energy metering in PV solar applications. The current inputs/outputs and also the voltage inputs are made so to simplify the string common connections. Direct connection up to 16A or 30A depending on the model. Moreover the unit is provided with an auxiliary serial communication bus. Alarms, fuse blow detection, PV module connection and serial communication are managed by means of VIM-M module. Housing for DIN-rail mounting, IP40 (front) protection degree.

## How to order



## Type Selection

<b>Range</b>	<b>AV10 :</b>	1000V DC, 16A (Direct connection) (*)
	<b>AV30 :</b>	1000V DC, 30A (Direct connection) (**). In this case the "Option" is "XX".
<b>Power supply</b>	<b>X :</b>	from 12 to 28VDC, self-power supply from VIM-M unit
<b>Communication</b>	<b>S :</b>	auxiliary communication bus, compatible only to VIM-M module (*)
<b>Option</b>	<b>XX :</b>	none (no fuse holder)
	<b>FX :</b>	with fuse holder

(\*) as standard.  
(\*\*) on request.